

# MERT

Marion County Emergency Radio Team



## COMMUNICATIONS UPDATE

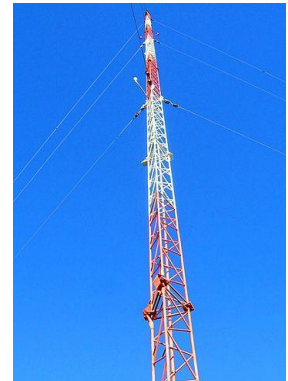
June 2020 Update

### CERT HAM Radio Repeater KJ4CLL Relocation

The Marion County Emergency Radio Team (MERT) provides the following information update to all Community Emergency Response Teams (CERT) within Marion County, Florida having HAM radio capability and FCC licensed operators.

The Marion County Sheriff's Office (MCSO) has moved the primary **MERT/CERT** reporting repeater, **KJ4CLL** (145.330 MHz), from the MCSO Emergency Operations Center (EOC) to the Marion County Baseline Landfill and Transfer Facility.

The new location is approximately 8.51 miles Southeast (121°) and is now active. The new site allowed an elevation of the primary antenna to 300 ft. above ground level (AGL) supporting significantly improved County-wide **MERT/CERT** radio operations.



For more information and additional details on the relocation of the **CERT** repeater KJ4CLL, visit the Marion County Emergency Radio Team website: <https://kg4nxo.com/contact/> .....and complete the "CONTACT US" page.

**Please distribute the following information to all CERT HAM operators:**

#### **CERT Reporting Frequencies:**

These radio frequencies have been designated by MCSO & **MERT** for use during emergency events.

**CERT report primary repeater: KJ4CLL @ 145.330 MHz Offset: -600 kHz CTCSS: 123 Hz**

**CERT report backup repeater: K4GSO @ 146.610 MHz Offset: -600 kHz CTCSS: 123 Hz**

#### **MCSO/MERT Assigned Intra-Community HAM Frequencies for CERT**

The following HAM VHF (2 Meter) radio frequency assignments have been made to reduce **CERT** communications conflicts within some Marion County communities during drills and emergency conditions. These assignments also permit direct inter-community radio traffic when needed for regular **CERT** communications, joint training drills and whenever emergency

# MERT

## Marion County Emergency Radio Team



support is requested between **CERT's**. These frequency assignments are to be used only by FCC licensed Operators. [Note: All frequencies are Simplex.]

Belleview	146.400	Marion Oaks	146.490	Salt Springs	146.595
Cherrywood	146.415	Meadow Wood Farms	146.505	Stonecrest	147.420
Dunnellon	146.430	Oak Run	146.535	Spruce Creek CC	147.550
Ocklawaha	146.445	Ocala Palms	146.550	Spruce Creek Preserve	147.450
Hill Top Estates	146.460	On Top of the World	146.565	Stone Creek	147.465
Marion Landing	146.475	Paddock Park South	146.580	Summer Glenn	147.480

**Weekly MERT/CERT radio test:** The MCSO EOC has determined that a radio communications test be performed weekly by **MERT** in verifying the primary communications network is active and functioning properly. ALL community CERT HAMS are strongly encouraged to participate.

**Details:** Testing is scheduled each Thursday @ 8:00 PM on repeater KJ4CLL; 145.330 MHz, Repeater Offset -600 kHz; CTCSS tone 123 Hz. NET Control will ROLL CALL for check-ins.

### **MERT/CERT HAM Operator check-in protocol:**

The following radio protocol is used with check-in on KJ4CLL.

- 
- Announce 10 min and then 5 min prior to Net: CQCQCQ - The **MERT/CERT** KJ4CLL Net will start in \_\_\_\_ minutes

### At 8:00 PM, Net Control will begin the test and transmit:

- CQCQCQ - does anyone need to use this frequency before the MERT/CERT Net begins?
- Good Evening. This is (name) \_\_\_\_\_, (call sign) \_\_\_\_\_ and I will be the Net Control station for tonight's Net on KJ4CLL, frequency 145.330 MHz & backup repeater K4GSO on 146.610 MHz.
- The purpose of this Net is a test to allow **MERT & CERT** to determine the coverage area of the repeater and the quality of signal transmitted and received.
- ALL **CERT** Amateur Operators are encouraged to participate.
- Anyone having an announcement, please say CONTACT and wait to be recognized.

### Net Control will monitor/respond to any radio traffic. Upon completion, Net Control will proceed:

- The Net will last approximately 20 minutes. This will be done by ROLL CALL check in.
- All stations listen before transmitting. **CERT** Stations please identify yourselves as such.
- When your station is called, give your call sign, name, location and a signal report. **CERT** stations please identify yourselves as such and state the community you live in.

# MERT



## Marion County Emergency Radio Team

- ROLL CALL BEGINS NOW.

After ROLL CALL, the following notice will be transmitted.....

- Are there any additional stations that wish to check in, say CONTACT and your call sign. When acknowledged, give NAME, CALL SIGN, LOCATION and SIGNAL REPORT. COME NOW.....

After all new CONTACT's have made their reports, the following notice will be transmitted.....

- Are there any announcements or comments before we close?

Net Control will monitor and respond to any radio traffic, then transmits the following.....

- Thank you for your participation. Good Evening. This is (name) \_\_\_\_\_ (call sign) \_\_\_\_\_. This net is now closed and returns back to regular amateur use.
- 

### **Marion County Emergency Radio Team – MERT**

**History** – MERT was established to provide communications support to areas such as Sheriff Facilities, Fire Departments, Emergency Shelters, Hospitals/Healthcare Facilities, Points of Distribution, CERT Communities and other local/regional groups during declared emergencies and natural disasters. MERT volunteers assist in transferring critical communications between multiple public and private organizations about storm conditions, resource needs and important reports/requests. For more information on the procedural and operational aspects of MERT, visit website: <https://www.kg4nxxo.com/contact/>

**MERT Command** – MERT personnel are volunteers who are trained in the communication protocols established by the Federal Emergency Management Agency (FEMA) and administered locally by the Marion County Sheriff's Office (MCSO) Division of Emergency Management. All the members are experienced HAM radio operators having Technician, General and Amateur Extra or Advanced level Federal Communications Commission (FCC) licenses.



**MERT Radio Facilities (Primary)** – A MERT communications and HAM radio room is located at the MCSO EOC at 692 NW 30th Ave, Ocala, FL. More information about the Division of Emergency Management is at: <http://www.marionso.com/emergency-management>

# MERT

## Marion County Emergency Radio Team



### MERT Support for Marion County HAM's

Did you know that MERT members are available to help whenever questions arise about HAM radios and other communication challenges?



Do you need help setting up or programming a radio?



If you do.....bring it to MERT for expert assistance. Our team members have significant expertise with multiple manufacturers, models and types! They are available at the EOC (address on page 3) on Wednesdays from 9:30 to 11:00 am.



Please bring your programming cables, User Manual and other manufacturer information/software for our member's reference.

Visit our website at <https://www.kg4nxx.com/contact/> to coordinate your visit.

### CERT HAMS and SKYWARN

**MERT** encourages all Marion County **CERT** HAMS to participate in the weekly SKYWARN Net each Wednesday evening at 7:30 PM on repeater K4GSO @ 146.610 MHz Offset: -600 kHz CTCSS: 123 Hz. By joining in and providing a local weather report, you will better prepare yourself reporting important information during and after an emergency event.

For more information, visit: <https://www.kg4nxx.com> and <https://www.weather.gov/mfl/skywarn>



#### **SKYWARN®**

SKYWARN is a national network of volunteer severe weather spotters. The spotters are trained by local National Weather Service Forecast Offices (local office Jacksonville, FL) on how to spot severe thunderstorms, tornadoes, hail and flooding.